

XERO
TECHNOLOGY
INFRASTRUCTURE



XTI | 3.0 G Square

(with 10mm glass lens)

80mm x 84mm

IP66 | IK10



THIS IS A SPECIAL ORDER

Thank you for considering this Special Order Product.

Please note that this product may require a longer lead time and minimum order quantity.

For more detailed information on this profile, we recommend speaking with your local Xero Specification Consultant.

Visit xerolighting.com/contact for further assistance

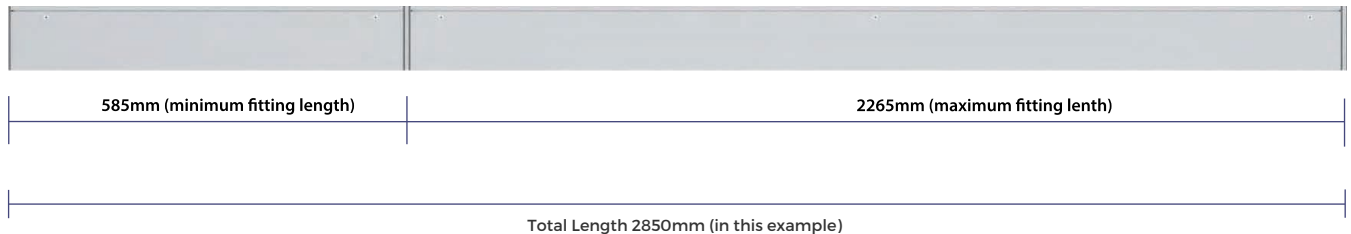
10mm Lens



DATA TABLE

Output	4ft Length T120mm	Luminous Flux (Delivered Lumens)	LO 1900	HO 3500	
	Xeramix	CRI	80+		
		Lumen Maintenance	114,000 Hours (L90 B10 @ 50°) IM hours (L70 B10 @50°C)		
	Proformax	CRI	80+		
		Lumen Maintenance	82,000 Hours (L80 B10 @ 25°)		
Warranty	Xeramix		Xeramix I = 10 years, Xeramix R = 15 Years		
	Proformax		Proformax RGBW = 5 years, Proformax S = 7 years		
	Proformax S				
Electrical	Power Consumption		Between 20 and 45w/m (3.28 feet)		
	Voltage input range		120 – 277V		
	Control methods		Dimming options for white light: 0-10V, DALI, DMX Optional RGB / Sunset Dimming control DMX or DALI XI		
	Total harmonic distortion THD		9.8% max		
	Approvals		UL / CE / CCC / AS:NZS / EMC		
Physical	Dimensions		80mm W x 84mm H		
	Weight per metre		6.2kg per metre		
	Housing		Aluminium Extrusion with: Standard – silver powder-coat, black or white textured, (or) optional selected powder-coated finish		
	Diffuser		10mm Toughened Glass & Frosted Acrylic Plexiglass / 10mm Toughened Glass & Louvres available in White, Black, or Silver / Optional Laminated & Toughened Glass Panel with Coloured Interlayer available		
	Connections		Optional polarised electrical connection between sections		
	Compatible ceiling type		Suitable for drywall ceilings, metal pan, concrete, timber and T bar grid ceilings		
	Mounting		Wire Suspension and Cable Base with Integrated Cable Management		
	Joiner options		90° / Straight / 180° / Custom		
	Operating temperatures		Xeramix -25°C to 50°C (-13°F to 140°F) Proformax RGBW -25°C to 35°C (-13°F to 95°F) Proformax S = -25°C to 35°C (-13°F to 95°F)		
	Environment		Luminaire IP66 (Diffuser must not face upwards).		
	Chemical Resistance		Glass provides resistance to some astringent chemicals		
	LED board types		Xeramix I and Xeramix R boards and drivers in 25mm / 280mm / and 560mm Zhaga compatible. Proformax in 50mm / 100mm / 280mm lengths Zhaga compatible Proformax S LED boards in 140mm / 280mm / 560mm lengths Zhaga compatible		
	IK rating		IK10		
	Minimum length adjustment		Xeramix = 1mm, Proformax = 25mm, Proformax S = 140mm		
	Vandal-proof		Available with Anti-Vandal Fasteners		
	Optional extras		Lanyards / Emergency packs / Camera / Environmental Plugs / Thermal throttle / IOT connectivity. Environmental anti- gravity coating		

Example of standard length combination



CREATING LENGTHS WITH XTI | 3.0 G Square IP66 | IK10

The XTI | 3.0 IP66 IK10 set lengths can be coupled together in any combination to achieve the desired length.

Note: custom lengths are also available – please consult your local Xero office for information

The XTI | 3.0 IP66 IK10 set lengths can be coupled together in any combination to achieve the desired length.

CUSTOM LENGTHS

Custom lengths are available in 0.984" (25mm) increments

Optical control

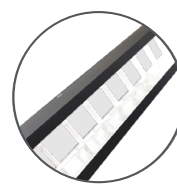
XTI profiles come with many diffuser options for glare control in any application



Silver Louvre



Black Louvre



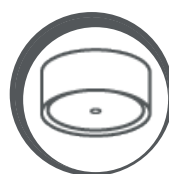
White Louvre



10mm
Toughened Glass
& Frosted
Acrylic Plexiglass

Note: All Louvres are behind 10mm Toughened Glass Cover

Accessories



XM3
Canopy Kit



Vandal proof
option



EWIS speaker
option



Emergency
packs