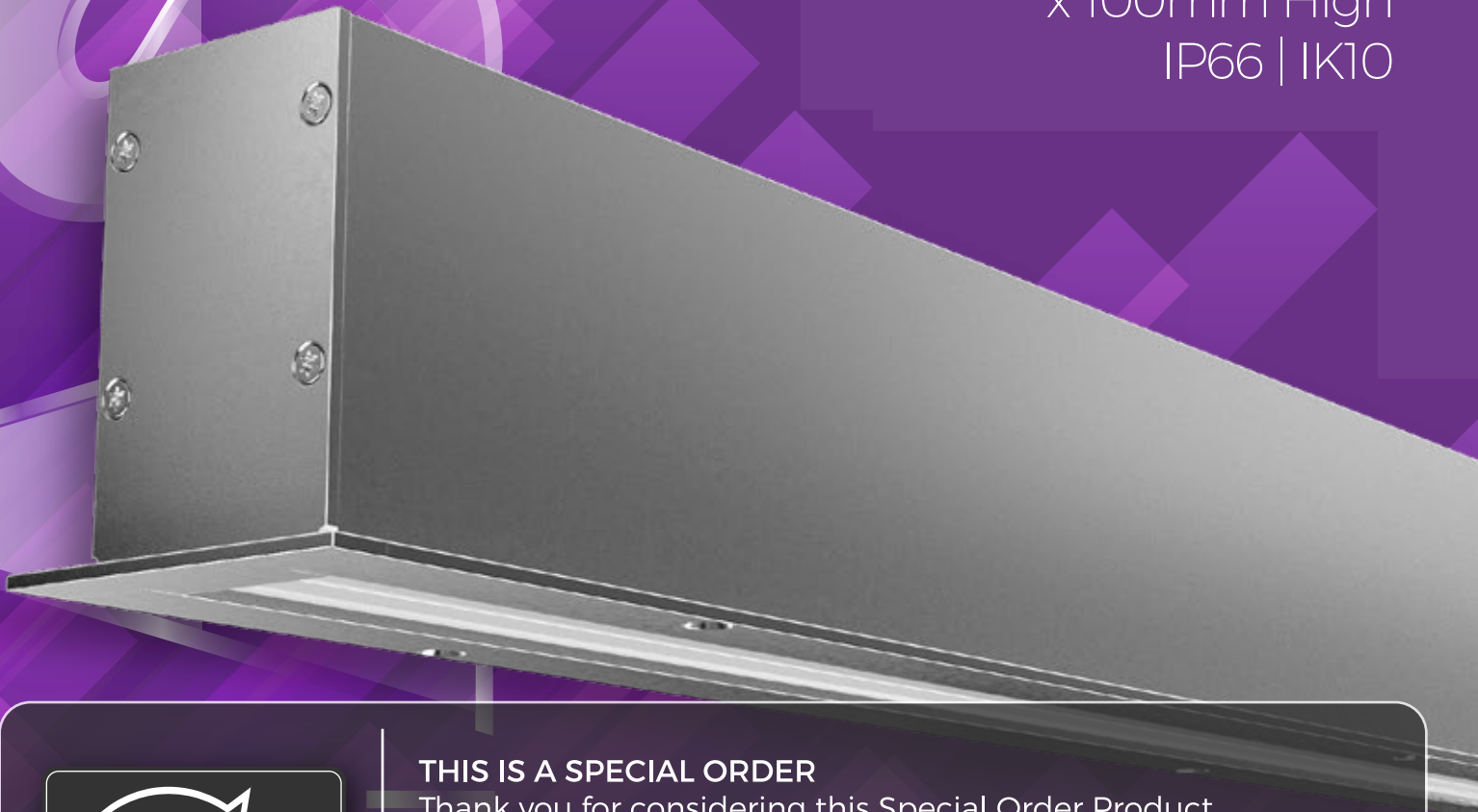


XERO
TECHNOLOGY
INFRASTRUCTURE



XTI | 2.0 G WF Recessed

(with 10mm glass lens)
60mm Wide (84mm Wide inc flange)
x 100mm High
IP66 | IK10



THIS IS A SPECIAL ORDER

Thank you for considering this Special Order Product.
Please note that this product may require a longer lead time
and minimum order quantity.
For more detailed information on this profile, we recommend
speaking with your local Xero Specification Consultant.
Visit xerolighting.com/contact for further assistance

10mm Lens



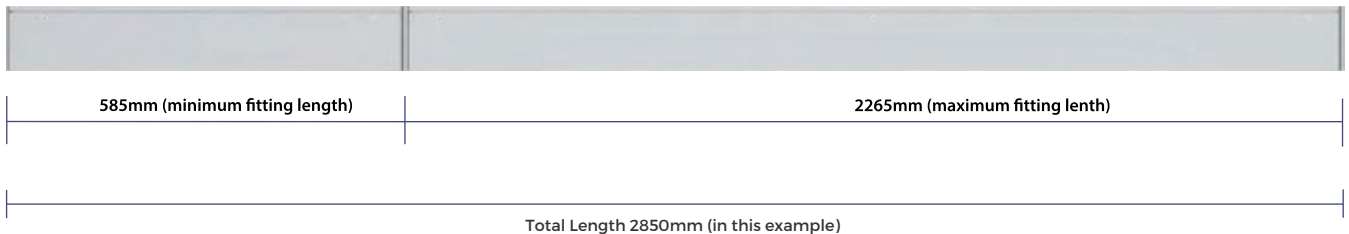
XTI | 2.0 G WF Recessed

DATA TABLE

| Output | 4ft Length 1120mm | Luminous Flux (Delivered Lumens) | LO 1900 | HO 3500 | |
|------------|-------------------------------|-------------------------------------|--|------------|--|
| | Xeramix 1 / Xeramix R | CRI | 80+ | | |
| | Xeramix R | Lumen Maintenance | 114,000 hours [L90 B10 @ 50°C] 1M hours [L70 B10 @ 50°C] | | |
| | Proformax | CRI | 80+ | | |
| | Proformax S | Lumen Maintenance | 82,000 hours [L80 B10 @ 25°C] | | |
| Warranty | Xeramix | | Xeramix 1 = 10 years / Xeramix R = 15 years | | |
| | Proformax | | ProformaxS 7 years | | |
| Electrical | Power Consumption | | Between 20 and 45w/m | | |
| | Voltage input range | | 120 – 277V | | |
| | Control methods | | Dimming options for white light: 0-10V, DALI, DMX Optional RGB / Sunset Dimming control DMX or DALI XI | | |
| | Total harmonic distortion THD | | 9.8% max | | |
| | Approvals | | UL / CE / CCC / AS/NZS / EMC | | |
| Physical | Dimensions | | 60mm (2.598") X 100mm (3.937") (inc flange 77mm 3.031" Wide) | | |
| | Weight per metre | | 3.6kg (7.9lbs) average weight | | |
| | Housing | | Aluminium Extrusion with: Standard – silver powder-coat, black or white textured, (or) optional selected powder-coated finish | | |
| | Diffuser | | Opaque Polycarbonate Diffuser / Clear Polycarbonate Diffuser / Parabolic Louvre / Louvres available in White, Black, or Silver | | |
| | Connections | | Optional polarised electrical connection between sections | | |
| | Compatible ceiling type | | Suitable for gyprock (drywall) ceilings, metal pan, concrete, timber and T-bar grid ceilings | | |
| | Mounting | | Wire Suspension, Surface mount (with external bracket), Wall Blocks, End wall Bracket | | |
| | Joiner options | | Single sections only | | |
| | Operating temperatures | | Xeramix = -25°C to 50°C (-13°F to 140°F) Proformax = -25°C to 35°C (-13°F to 95°F) Proformax S = -25°C to 35°C (-13°F to 95°F) | | |
| | Environment | | IP66 (not in direct sunlight) (diffuser must not face upwards) | | |
| | Minimum length adjustment | | Xeramix = 1mm, Proformax = 25mm, Proformax S = 140mm | | |
| | LED board types | | Xeramix LED boards in 25mm / 100mm / 280mm / 560mm lengths Zhaga compatible Proformax LED boards in 50mm / 280mm / 560mm lengths Zhaga compatible Proformax S LED boards in 140mm / 280mm / 560mm lengths Zhaga compatible | | |
| | IK rating | | IK11 | | |
| | Vandal proof | | Available with anti-vandal fasteners | | |
| | Optional extras | | Lanyards / Emergency packs / Camera / Environmental plugs / Thermal throttle / IOT connectivity | | |

XTI | 2.0 G WF Recessed

Example of standard length combination



CREATING LENGTHS WITH XTI | 2.0 G WF Recessed IP66 | IK10

The XTI | 2.0 IP66 | IK10 set lengths can be coupled together in any combination to achieve the desired length.

Note: custom lengths are also available – please consult your local Xero office for information

The XTI | 2.0 IP66 IK10 set lengths can be coupled together in any combination to achieve the desired length.

CUSTOM LENGTHS

Custom lengths are available in 0.984" (25mm) increments

Note: The above measurements do not include flange width

Optical control

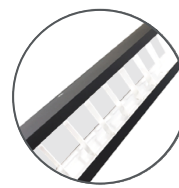
XTI profiles come with many diffuser options for glare control in any application



Silver Louvre



Black Louvre



White Louvre



10mm
Toughened Glass
& Frosted
Acrylic Plexiglass

Accessories



Vandal proof
option



EWIS speaker
option



Emergency
packs