

XERO
TECHNOLOGY
ADVANCED 

XTA | 3.0 Square

metric	80mm Wide x 80mm High
imperial	3.15" Wide x 3.15" High

LINEAR
OPTIK 
OPTION


LOW UGR
OPTION

ADVANCED
INDUSTRY BEST
10^{YEAR}
WARRANTY

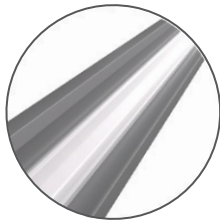
DATA TABLE

Output	4ft Length 1120mm	Luminous Flux (Delivered Lumens)	LO 1900	HO 3500	
Output	Xeramix	CRI	80+		
		Lumen Maintenance:	114,000 Hours (L90 B10 @ 50°)		
	Proformax Proformax S	CRI:	90+		
		Lumen Maintenance:	82,000 Hours (L80 B10 @ 35°)		
Warranty	Xeramix		10 years		
	Proformax / Proformax S		7 years		
Electrical	Power Consumption		Between 20 and 45w/m		
	Voltage input range		120 – 277V		
	Control methods		Dimming options for white light: 0-10V, DALI, DMX Optional RGB / Sunset Dimming control DMX or DALI XI		
	Total harmonic distortion THD		9.8% max		
	Approvals		UL / CE / CCC / AS:NZS / EMC		
Physical	Dimensions		80mm Wide x 87mm High		
	Weight per metre		4kg (8.8lbs) average weight		
	Distribution		Symmetric / Low UGR Plexiglass		
	Housing		Aluminium Extrusion with standard silver powder-coat, black or white textured, (or) optional selected powder-coated finish		
	Upward diffuser		PlexiGlass * Linear OPTIK series: includes 40° Beam, 60° Beam, 70° Beam, 90° Beam, 110° Wide Beam, 145° Extra Wide Beam, 165° Extra Wide Beam, Asymmetric Beam, Double Asymmetric Beam * NOTE: NOT AVAILABLE IN IP55		
	Downward diffuser		PlexiGlass / Polycarbonate lens / Microprism lens / Low UGR Plexiglass / Louvres available in White, Black, or Silver * Linear OPTIK series: includes 40° Beam, 60° Beam, 70° Beam, 90° Beam, 110° Wide Beam, 145° Extra Wide Beam, 165° Extra Wide Beam, Asymmetric Beam, Double Asymmetric Beam * NOTE: NOT AVAILABLE IN IP55		
	Connections		Speed connect joining system with polarised electrical connection between sections		
	Compatible ceiling type		Suitable for gyprock (drywall) ceilings, metal pan, concrete, timber and T-bar grid ceilings		
	Mounting		Field adjustable rollerball wire suspensions / rod suspensions / wall mounting / surface mount		
	Joiner options		Lit corner 90° / Cross 90° / Tee 90° / Straight 180° Join		
	Operating temperatures		Xeramix = -25°C to 50°C (-13°F to 140°F) Proformax = -25°C to 35°C (-13°F to 95°F) Proformax S = -25°C to 35°C (-13°F to 95°F)		
	Environment		(IP20) – Dry indoor applications only (IP55) Not in direct sunlight		
	Minimum length adjustment		Xeramix = 1mm, Proformax = 25mm, Proformax S = 140mm		
	LED board types		Xeramix LED boards in 25mm / 100mm / 280mm / 560mm lengths Zhaga compatible Proformax LED boards in 50mm / 280mm / 560mm lengths Zhaga compatible Proformax S LED boards in 140mm / 280mm / 560mm lengths Zhaga compatible		

XTA | 3.0 Square
indoor series IP20

Optical control

All XTA profiles come with many diffuser options for glare control in any application



*Linear OPTIK



Low UGR
Plexiglass



Polycarbonate



Plexiglass



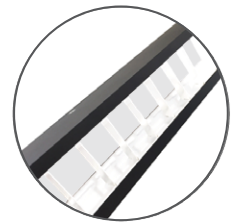
Microprism



Silver Louvre



Black Louvre



White Louvre

LINEAR
OPTIK

*Beam angles



Asymmetric



Double
Asymmetric



40° Beam



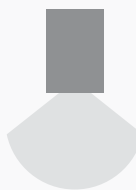
60° Beam



70° Beam



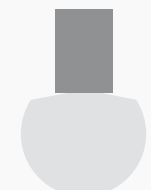
90° Beam



110° Wide
Beam

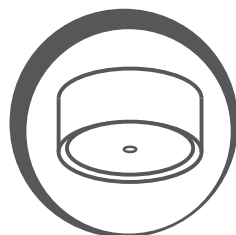


145° Wide
Beam



165° Wide
Beam

Accessories and options



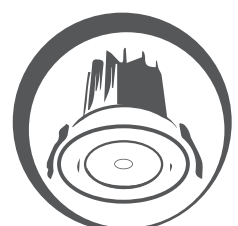
XM3 Canopy
Kit



sensors / daylight
harvesting



emergency packs



downlights