

XTI | 2.0 G WF Recessed

(with 10mm glass lens)
60mm Wide (84mm Wide inc flange)
x 100mm High
IP66 | IK10



10mm Lens



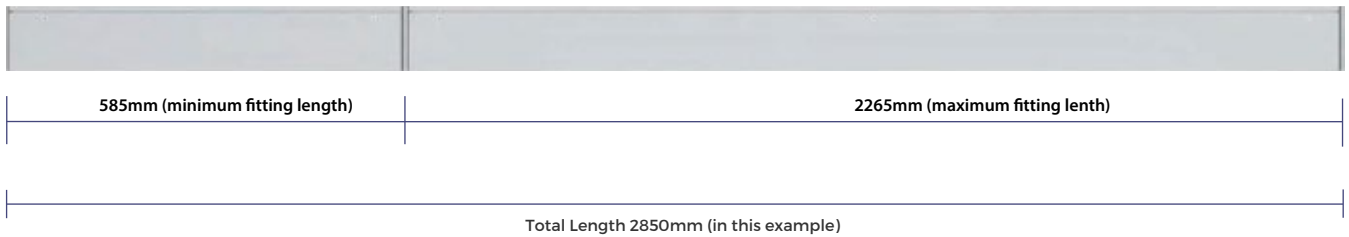
XTI | 2.0 G WF Recessed

DATA TABLE

Output	4 Ft Length 1120mm	Luminous Flux (Delivered Lumens)	LO	HO	
			1900	3500	
Output	Xeramix	CRI:	80+		
		Lumen Maintenance:	114,000 Hours (L90 B10 @ 50°) IM hours (L70 B10 @50°C)		
	Proformax RGBW	CRI:	80+		
		Lumen Maintenance:	82,000 Hours (L80 B10 @ 25°)		
Warranty	Xeramix	Xeramix I = 10 years Xeramix R = 15 Years			
	Proformax	RGBW = 5 years			
Electrical	Power Consumption	Between 20 and 45w/m			
	Voltage input range	120 - 277V			
	Control methods	Dimming options for white light: 0-10V, DALI, DMX Optional RGB / Sunset Dimming control DMX or DALI XI			
	Total harmonic distortion THD	9.8% max			
	Approvals	UL / CE / CCC / AS:NZS / EMC			
	Physical	Dimensions	60mm Wide (84mm Wide inc flange) x 100mm High		
Physical	Weight per metre	5.9kg per metre			
Physical	Housing	Aluminium Extrusion with silver powder-coat or selected powder-coated finish			
Physical	Diffuser	10mm Toughened Glass & Frosted Acrylic Plexiglass / 10mm Toughened Glass & Semi Specular Louvre / Optional Laminated & Toughened Glass Panel with Coloured Interlayer available			
Physical	Connections	Optional polarised electrical connection between sections			
Physical	Compatible ceiling type	Suitable for drywall ceilings, metal pan, concrete, timber and T bar grid ceilings			
Physical	Mounting	Recessed Flange Mounted, Sliding Thread Stud Bracket, Sliding Surface Mounting Plate, Wire Suspension Kit			
Physical	Joiner options	90° / Straight / 180° / Custom			
Physical	Operating temperatures	Xeramix -25°C to 50°C (-13°F to 140°F) Proformax RGBW -25°C to 35°C (-13°F to 95°F)			
Physical	Environment	Luminaire IP66 (Diffuser must not face upwards).			
Physical	Chemical Resistance	Glass provides resistance to some astringent chemicals			
Physical	IK rating	IK10			
Physical	Minimum length adjustment	Luminaire 25mm			
Physical	LED Board types	Xeramix I and Xeramix R boards and drivers in 25mm / 280mm / and 560mm Zhaga compatible. Proformax in 50 / 100 / 280mm lengths Zhaga compatible			
Physical	Vandal Proof	Available with Anti-Vandal Fasteners			
Physical	Optional Extras	Lanyards / Emergency packs / Camera / Environmental Plugs / Thermal throttle / IOT connectivity. Environmental anti- graffiti coating			

XTI | 2.0 G WF Recessed

Example of standard length combination



CREATING LENGTHS WITH XTI | 2.0 G WF Recessed IP66 | IK10

The XTI | 2.0 IP66|IK10 set lengths can be coupled together in any combination to achieve the desired length.

Note: custom lengths are also available – please consult your local Xero office for information

The XTI | 2.0 IP66 IK10 set lengths can be coupled together in any combination to achieve the desired length.

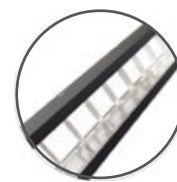
CUSTOM LENGTHS

Custom lengths are available in 0.984" (25mm) increments

Note: The above measurements do not include flange width

Optical control

XTI profiles come with many diffuser options for glare control in any application



10mm
Toughened Glass
& Semi Specular
Louvre



10mm
Toughened Glass
& Frosted
Acrylic Plexiglass

Accessories



Vandal proof
option



EWIS speaker
option



Emergency
packs