

XERO  
TECHNOLOGY  
ADVANCED 

## XTA | 3.0 Beam

metric 80mm Wide x 150mm High

imperial 3.15" Wide x 5.90" High

  
**LOW UGR**  
OPTION

ADVANCED  
INDUSTRY BEST  
**10**  
YEAR  
WARRANTY

## DATA TABLE

LED Engine	4ft Length	Luminous Flux (Delivered Lumens)	LO	HO	
	1120mm		1900	3500	
	Xeramix	CRI	80+		
		Lumen Maintenance:	114,000 Hours ( L90 B10 @ 50° )		
	Proformax	CRI:	90+		
		Lumen Maintenance:	82,000 Hours ( L80 B10 @ 35° )		
Warranty	Xeramix		10 years		
	Proformax		7 years		
Electrical	Power Consumption		Between 20 and 45w/m		
	Voltage input range		120 – 277V		
	Control methods		Dimming options for white light: 0-10V, DALI, DMX Optional RGB / Sunset Dimming control DMX or DALI XI		
	Total harmonic distortion THD		9.8% max		
	Approvals		UL / CE / CCC / AS:NZS / EMC		
Physical	Dimensions		80 X 150 mm		
	Weight per metre		6.3kg (13.8lbs) average weight		
	Distribution		Symmetric		
	Housing		Aluminium Extrusion with standard silver powder-coat, black or white textured, (or) optional selected powder-coated finish		
	Upward diffuser		Frosted acrylic lens / Polycarbonate lens / Microprism lens		
	Downward diffuser		Frosted acrylic lens / Polycarbonate lens / Microprism lens / Optic white louvre / Semi specular louvre / Low UGR Plexiglass		
	Connections		Speed connect joining system with polarised electrical connection between sections		
	Compatible ceiling type		Suitable for gyprock (drywall) ceilings, metal pan, concrete, timber and T-bar grid ceilings		
	Mounting		Field adjustable rollerball wire suspensions / rod suspensions / wall mounting		
	Joiner options		Lit corner 90° / Cross 90° / Tee 90° / straight 180° join		
	Operating temperatures		Xeramix = -25°C to 50°C (-13°F to 140°F) Proformax = -25°C to 35°C (-13°F to 95°F)		
	Environment		Dry indoor applications only		
	Minimum length adjustment		Xeramix = 1mm Proformax = 25mm		
	LED Board types		Xeramix LED boards in 25 / 100 / 280 / 560mm lengths Zhaga compatible Proformax LED boards in 50 / 280mm / 560mm lengths Zhaga compatible		

## Optical control (down)

All XTA profiles come with many diffuser options for glare control in any application



polycarbonate



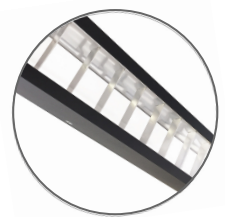
plexiglass



microprism



optic white  
louvre



semi specular  
louvre



low UGR  
plexiglass

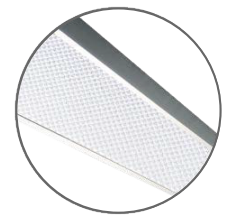
## Optical control (up)



polycarbonate

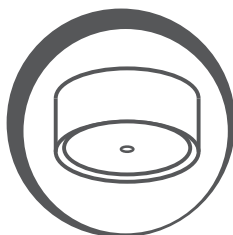


plexiglass



microprism

## Accessories and options



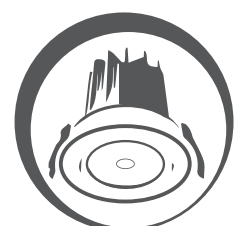
XM3 Canopy  
Kit



sensors / daylight  
harvesting



emergency packs



downlights