

XERO
TECHNOLOGY
ADVANCED 

XTA | 1.6 OPTIK Slot



metric 40mm Wide x 90mm High

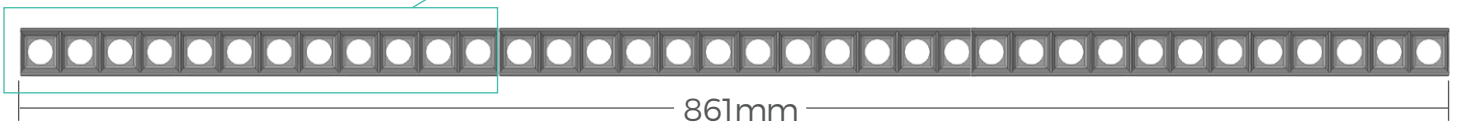
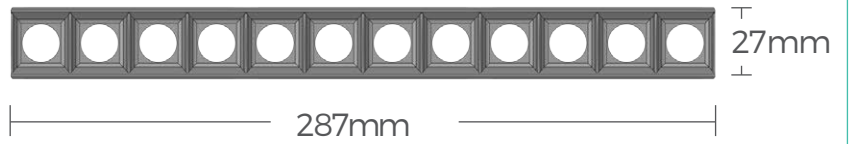
imperial 1.574" Wide x 3.543" High



DATA TABLE

| Optic Module LED Engine | 4ft Length 1120mm | Luminous Flux (Delivered Lumens) | LO 1900 | HO 3500 | |
|----------------------------|-------------------------------|--|------------|------------|--|
| | Xeramix | CRI | 80+ | | |
| | Lumen Maintenance: | 114,000 Hours (L90 B10 @ 50°) | | | |
| Proformax | CRI: | 90+ | | | |
| | Lumen Maintenance: | 82,000 Hours (L80 B10 @ 35°) | | | |
| Warranty | Xeramix | 10 years | | | |
| | Proformax | 7 years | | | |
| Electrical | Power Consumption | Between 20 and 45w/m | | | |
| | Voltage input range | 120 – 277V | | | |
| | Control methods | Dimming options for white light: 0-10V, DALI Dimming control: DALI | | | |
| | Total harmonic distortion THD | 9.8% max | | | |
| | Approvals | UL / CE / CCC / AS:NZS / EMC | | | |
| Physical | Dimensions | 40 X 90 mm | | | |
| | Weight per metre | 3.5kg (7.7lbs) average weight | | | |
| | Housing | Aluminium Extrusion with standard silver powder-coat, black or white textured, (or) optional selected powder-coated finish | | | |
| | Diffuser | Frosted acrylic lens / Polycarbonate lens | | | |
| | Optic module | Baffles are available in black and white, optic distributions available in Oval Beam Wall Washer, 18° Spot Beam, 28° Medium Beam, 52° Asymmetric Wide Beam, 64° Wide Beam and 60° Batwing Beam | | | |
| | Connections | Speed connect joining system with polarised electrical connection between sections | | | |
| | Compatible ceiling type | Suitable for gyprock (drywall) ceilings, metal pan, concrete, timber and T-bar grid ceilings | | | |
| | Mounting | Field adjustable rollerball wire suspensions / rod suspensions / wall mounting / surface mount | | | |
| | Joiner options | Lit corner 90° Cross 90° Tee 90° straight 180° join | | | |
| | Operating temperatures | Xeramix = -25°C to 50°C (-13°F to 140°F) Proformax = -25°C to 35°C (-13°F to 95°F) | | | |
| | Environment | Dry indoor applications only | | | |
| | Minimum length adjustment | Xeramix = 1mm Proformax = 25mm | | | |
| | LED Board types | Xeramix LED boards in 25 / 100 / 280 / 560mm lengths Zhaga compatible Proformax LED boards in 50 / 280mm / 560mm lengths Zhaga compatible | | | |

dimensions of baffle



The OPTIK baffle can be arranged in a maximum of three modules then a minimum 50mm cover plate is required.

accessories



sensors / daylight
harvesting



emergency packs

bend options



135°



cross 90°



tee 90°



custom



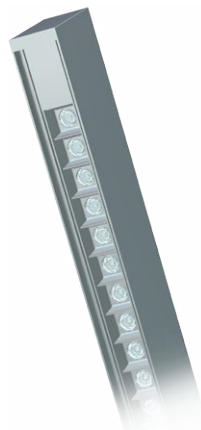
corner 90°



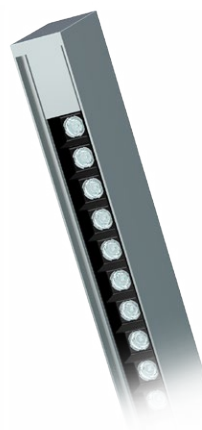
ceiling to wall

optics

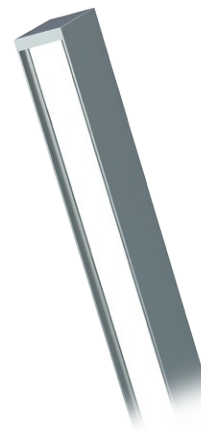
All XTA profiles come with many diffuser options for glare control in any application



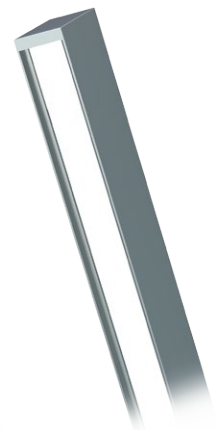
white baffle



black baffle



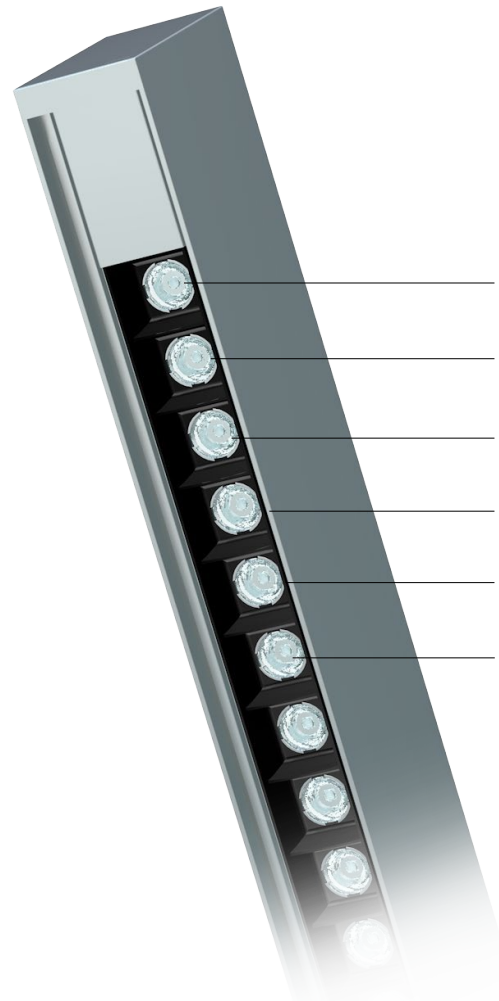
plexiglass



polycarbonate

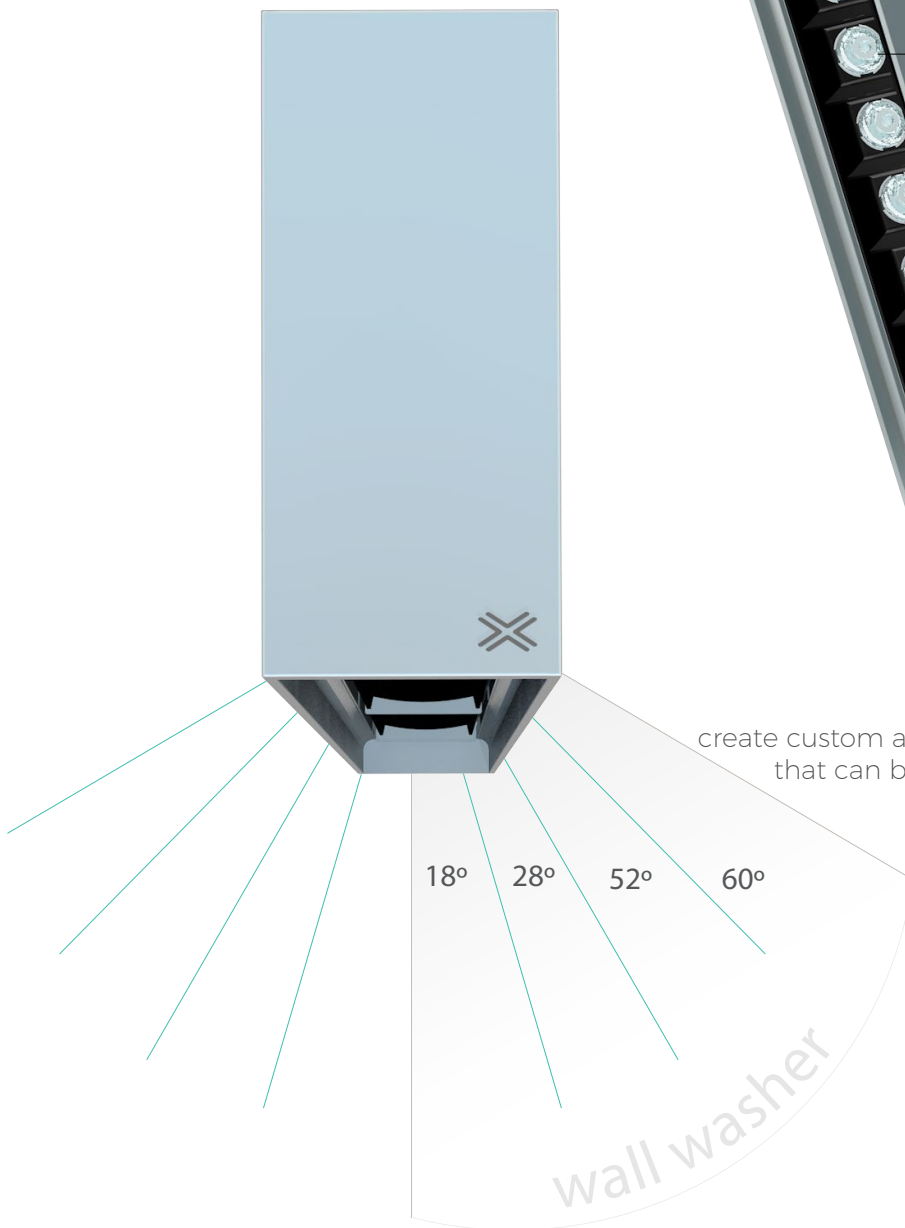
Individually selectable optics

The OPTIK module lenses come as standard with one variant lens per each module of 12. Although each lens can be individually configured and customised to suit your desired light configuration.



Optic lens options

- 18° Spot Beam
- 28° Medium Beam
- 52° Asymmetric Wide Beam
- 64° Wide Beam
- 60° Batwing Beam
- Oval Beam Wall Washer



Beam angles

The OPTIK profile gives you the ability to create custom angles to suit specific design requirements that can be applied to various applications including retail, office and residential environments

OPTIK profile configurations

