

XERO
TECHNOLOGY
INFRASTRUCTURE

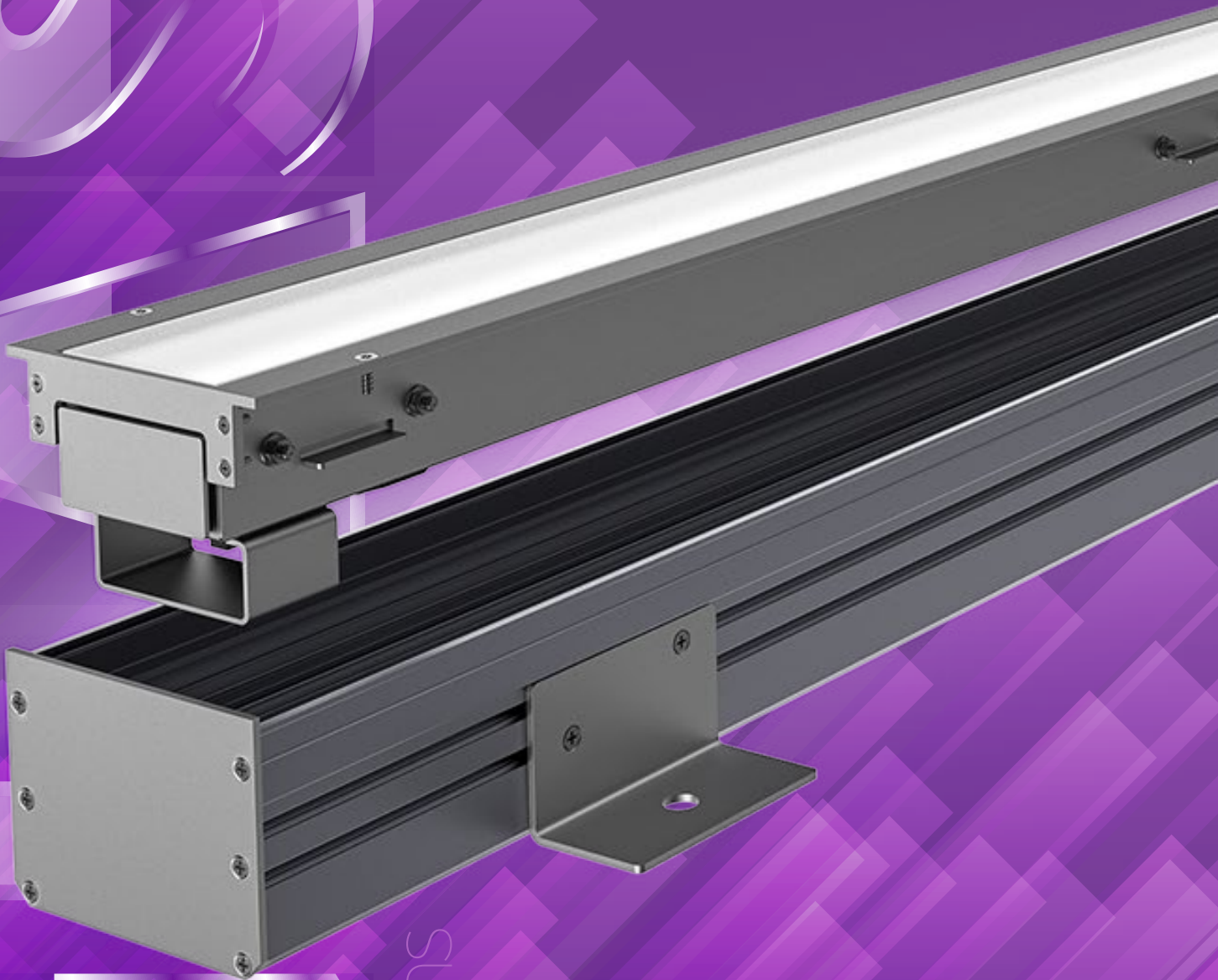


XTI | 5.0 G Inground

(with 12mm glass diffuser)

122mm Wide x 90mm High

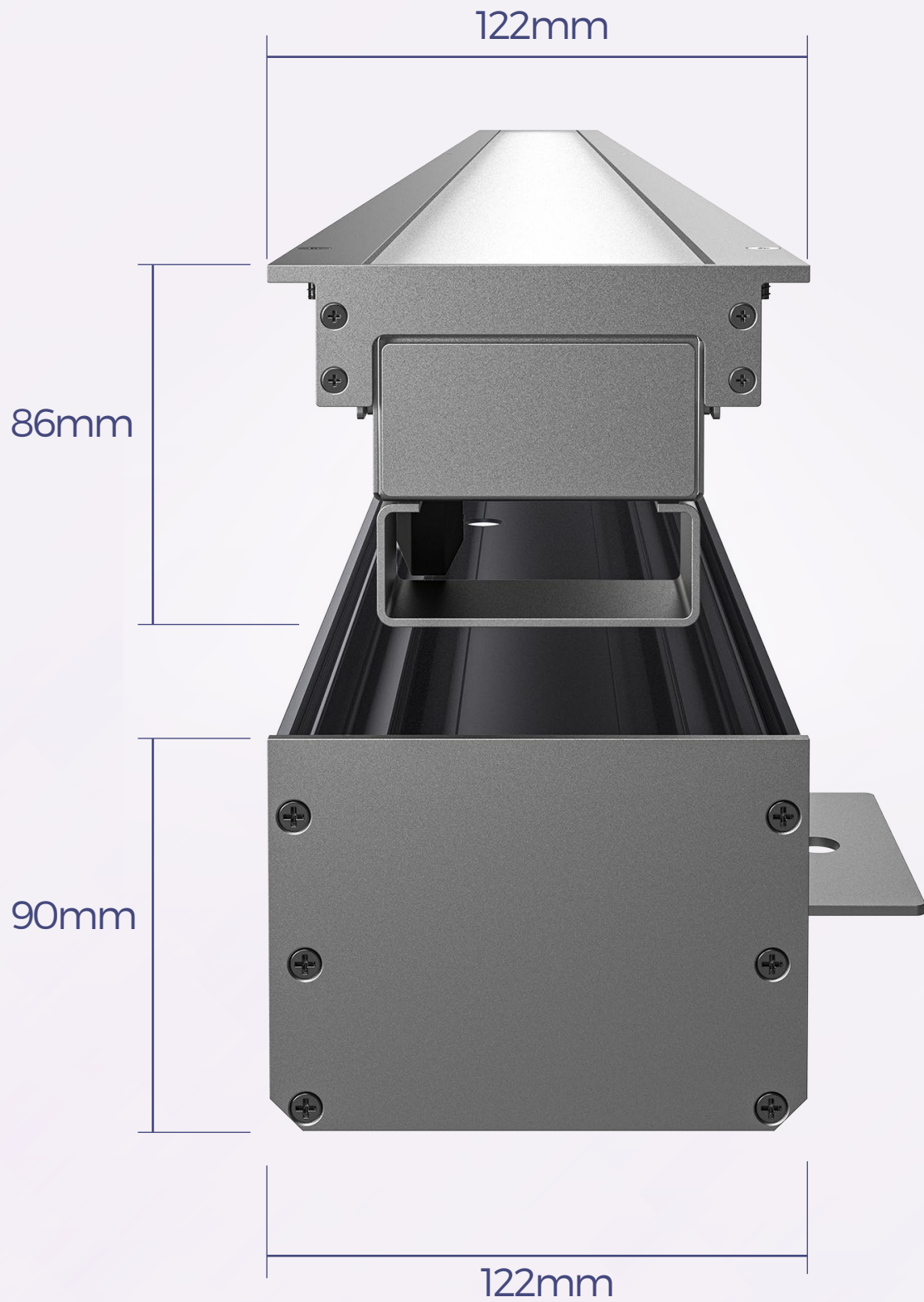
IP67 | IK10



12mm Lens



XTI|5.0G Inground



XTI | 5.0 G Inground

DATA TABLE

Output	Luminous Flux (Delivered Lumens)	950 lm/m
	CRI:	80+
	Lumen Maintenance:	80,000 hours [L80 B20 @ 35°C]
Warranty		Proformax24 (5 Years)
Electrical	Power Consumption	Fixed at 21W/m
	Voltage input range	120 - 277V
	Control methods	DALI 2
	Total harmonic distortion THD	5% max
	Approvals	UL / CE / CCC / AS:NZS / EMC
Physical	Dimensions	122mm x 90mm including the niche
	Weight per metre	6.9kg average weight
	Housing	Stainless Steel
	Diffuser	Laminated & Toughened Glass with white interlayer Optional colour interlayer available
	Connections	Optional polarised electrical connection between sections
	Distribution	Symmetric distribution
	Mounting	Inground niche for concrete or paving installation
	Joiner options	90° / Straight / 180° / Custom
	Operating temperatures	-25°C to 50°C (-13°F to 140°F)
	Environment	IP67
	Chemical Resistance	Glass provides resistance to some astringent chemicals
	IK rating	IK10
	Minimum length adjustment	140mm
	LED Board types	Proformax24 (24V system) in 140mm / 280mm and 560mm Zhaga lengths
	Vandal Proof	Available with Anti-Vandal Fasteners
Optional Extras	Thermal throttle, environmental plug, polarised / IP rated plug and socket Environmental anti-graffiti coating	

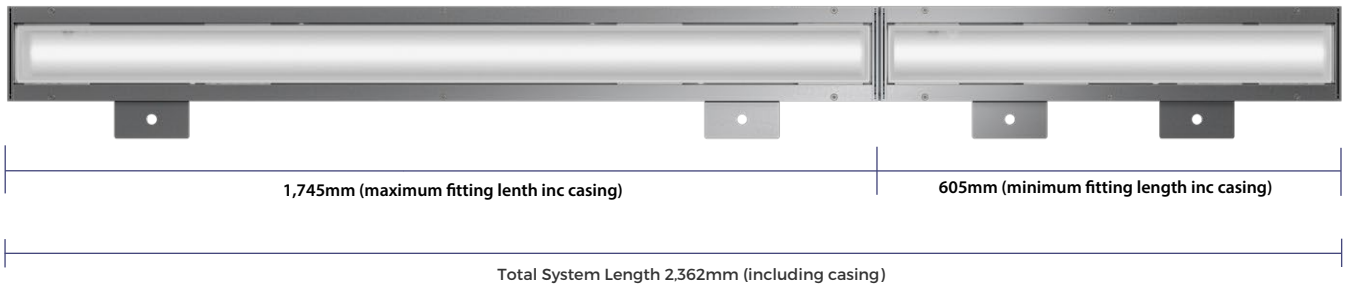
XTI | 5.0G Inground

Maximum Length

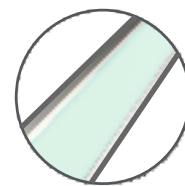
The maximum length of the XTI | 5.0 is 1,745mm in any single piece – Multiple pieces can be joined to achieve any overall length



Example of standard length combination



Optical control



Optional Laminated Glass with Coloured Interlayer



Laminated Glass with white interlayer

Accessories



Vandal Proof Option