

XERO
TECHNOLOGY
INFRASTRUCTURE



XTI | 3.0 G Square

(with 10mm glass lens)

80mm x 84mm

IP66 | IK10



10mm Lens

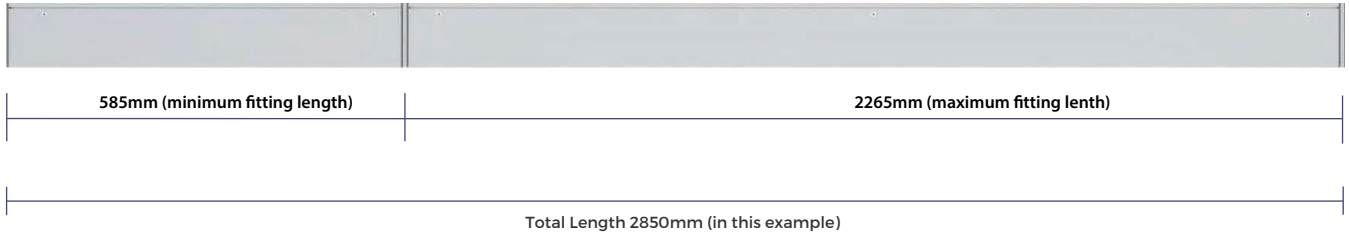


DATA TABLE

Output	4 Ft Length 1120mm	Luminous Flux (Delivered Lumens)	LO	HO	
			1900	3500	
Output	Xeramix	CRI:	80+		
		Lumen Maintenance:	114,000 Hours (L90 B10 @ 50°) IM hours (L70 B10 @50°C)		
	Proformax RGBW	CRI:	80+		
		Lumen Maintenance:	82,000 Hours (L80 B10 @ 25°)		
Warranty	Xeramix	Xeramix I = 10 years Xeramix R = 15 Years			
	Proformax	RGBW = 5 years			
Electrical	Power Consumption		Between 20 and 45w/m		
	Voltage input range		120 - 277V		
	Control methods		Dimming options for white light: 0-10V, DALI, DMX Optional RGB / Sunset Dimming control DMX or DALI XI		
	Total harmonic distortion THD		9.8% max		
	Approvals		UL / CE / CCC / AS:NZS / EMC		
	Dimensions		80mm Wide x 84mm High		
Physical	Weight per metre		6.2kg per metre		
	Housing		Aluminium Extrusion with anodised or powder-coated finish		
	Diffuser		10mm Toughened Glass & Frosted Acrylic Plexiglass / 10mm Toughened Glass & Semi Specular Louvre / Optional Laminated & Toughened Glass Panel with Coloured Interlayer available		
	Connections		Optional polarised electrical connection between sections		
	Compatible ceiling type		Suitable for drywall ceilings, metal pan, concrete, timber and T bar grid ceilings		
	Mounting		Wire Suspension, Rod Suspension and Cable Base with Integrated Cable Management		
	Joiner options		90° / Straight / 180° / Custom		
	Operating temperatures		Xeramix -25°C to 50°C (-13°F to 140°F) Proformax RGBW -25°C to 35°C (-13°F to 95°F)		
	Environment		Luminaire IP66 (Diffuser must not face upwards).		
	Chemical Resistance		Glass provides resistance to some astringent chemicals		
	IK rating		IK10		
	Minimum length adjustment		Luminaire 25mm		
	LED Board types		Xeramix I and Xeramix R boards and drivers in 25mm / 280mm / and 560mm Zhaga compatible. Proformax in 50 / 100 / 280mm lengths Zhaga compatible		
	Vandal Proof		Available with Anti-Vandal Fasteners		
	Optional Extras		Lanyards / Emergency packs / Camera / Environmental Plugs / Thermal throttle / IOT connectivity. Environmental anti- graffiti coating		

XTI | 3.0 G Square

Example of standard length combination



CREATING LENGTHS WITH XTI | 3.0 G Square IP66 | IK10

The XTI | 3.0 IP66 IK10 set lengths can be coupled together in any combination to achieve the desired length.

Note: custom lengths are also available – please consult your local Xero office for information

The XTI | 3.0 IP66 IK10 set lengths can be coupled together in any combination to achieve the desired length.

CUSTOM LENGTHS

Custom lengths are available in 0.984" (25mm) increments

Optical control

XTI profiles come with many diffuser options for glare control in any application

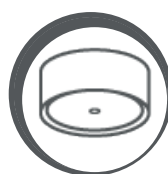


10mm
Toughened Glass
& Semi Specular
Louvre



10mm
Toughened Glass
& Frosted
Acrylic Plexiglass

Accessories



XM3
Canopy Kit



Vandal proof
option



EWIS speaker
option



Emergency
packs