

XTI | 2.0 G WF Recessed

(with 10mm glass lens)
60mm Wide (84mm Wide inc flange)
x 100mm High
IP66 | IK10



10mm Lens



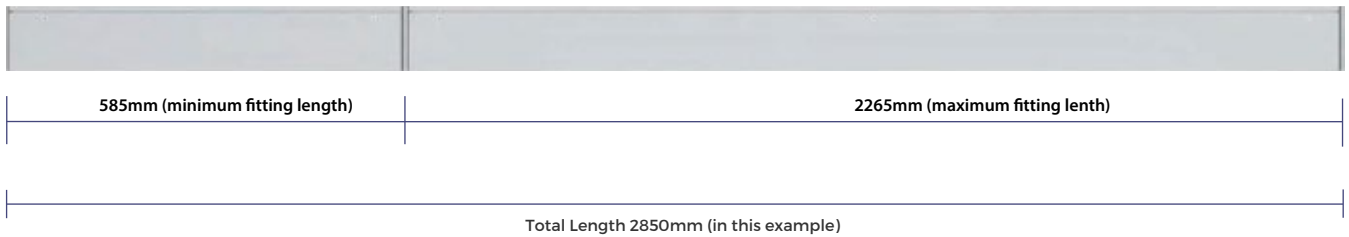
XTI | 2.0 G WF Recessed

DATA TABLE

Output	4 Ft Length 1120mm	Luminous Flux (Delivered Lumens)	LO 1900	HO 3500	
	Xeramix	CRI:	80+		
		Lumen Maintenance:	114,000 Hours (L90 B10 @ 50°) IM hours (L70 B10 @50°C)		
	Proformax RGBW	CRI:	80+		
Lumen Maintenance:		82,000 Hours (L80 B10 @ 25°)			
Warranty	Xeramix	Xeramix I = 10 years Xeramix R = 15 Years			
	Proformax	RGBW = 5 years			
Electrical	Power Consumption	Between 20 and 45w/m			
	Voltage input range	120 - 277V			
	Control methods	Dimming options for white light: 0-10V, DALI, DMX Optional RGB / Sunset Dimming control DMX or DALI XI			
	Total harmonic distortion THD	9.8% max			
	Approvals	UL / CE / CCC / AS:NZS / EMC			
Physical	Dimensions	60mm Wide (84mm Wide inc flange) x 100mm High			
	Weight per metre	5.9kg per metre			
	Housing	Aluminium Extrusion with anodised or powder-coated finish			
	Diffuser	10mm Toughened Glass & Frosted Acrylic Plexiglass / 10mm Toughened Glass & Semi Specular Louvre / Optional Laminated & Toughened Glass Panel with Coloured Interlayer available			
	Connections	Optional polarised electrical connection between sections			
	Compatible ceiling type	Suitable for drywall ceilings, metal pan, concrete, timber and T bar grid ceilings			
	Mounting	Recessed Flange Mounted, Sliding Thread Stud Bracket, Sliding Surface Mounting Plate, Wire Suspension Kit			
	Joiner options	90° / Straight / 180° / Custom			
	Operating temperatures	Xeramix -25°C to 50°C (-13°F to 140°F) Proformax RGBW -25°C to 35°C (-13°F to 95°F)			
	Environment	Luminaire IP66 (Diffuser must not face upwards).			
	Chemical Resistance	Glass provides resistance to some astringent chemicals			
	IK rating	IK10			
	Minimum length adjustment	Luminaire 25mm			
	LED Board types	Xeramix I and Xeramix R boards and drivers in 25mm / 280mm / and 560mm Zhaga compatible. Proformax in 50 / 100 / 280mm lengths Zhaga compatible			
	Vandal Proof	Available with Anti-Vandal Fasteners			
	Optional Extras	Lanyards / Emergency packs / Camera / Environmental Plugs / Thermal throttle / IOT connectivity. Environmental anti- graffiti coating			

XTI | 2.0 G WF Recessed

Example of standard length combination



CREATING LENGTHS WITH XTI | 2.0 G WF Recessed IP66 | IK10

The XTI | 2.0 IP66|IK10 set lengths can be coupled together in any combination to achieve the desired length.

Note: custom lengths are also available – please consult your local Xero office for information

The XTI | 2.0 IP66 IK10 set lengths can be coupled together in any combination to achieve the desired length.

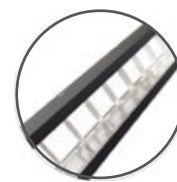
CUSTOM LENGTHS

Custom lengths are available in 0.984" (25mm) increments

Note: The above measurements do not include flange width

Optical control

XTI profiles come with many diffuser options for glare control in any application



10mm
Toughened Glass
& Semi Specular
Louvre



10mm
Toughened Glass
& Frosted
Acrylic Plexiglass

Accessories



Vandal proof
option



EWIS speaker
option



Emergency
packs