



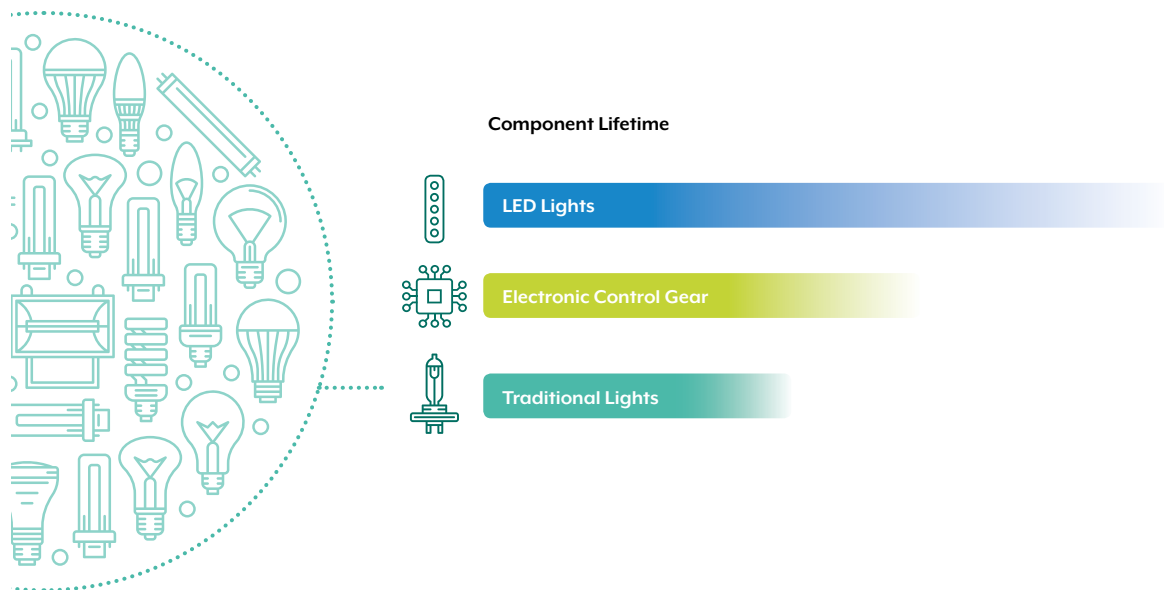
Xeramix R

Redundancy Relay



Xeramix R for redundancy and high reliability.

Luminaires commonly consist of two key components, a light source and electronic control gear (ECG). The luminaire lifetime is determined by the failure of one or both components, typically it's rated by the component with the shortest lifetime



Traditional Lighting

The ECG, in nearly all cases will outlast traditional light sources such as gas discharge, tungsten halogen or fluorescent. These light sources have always been the limiting factor so the industry adopted common practice of maintenance schedules to replace them accordingly.

LED Lighting

LEDs have quickly become the modern standard in lighting due to their small size, lower heat, energy efficiency and superior performance over time. The lifetime of the LEDs is so long that they will outlast the ECG which is now the limiting factor of the system lifetime.

Xeramix R

The Xeramix Redundancy relay is a high reliability, fail safe device, that engages a backup LED driver when the primary unit fails. This simple solution can provide up to double the luminaire's life without maintenance offering an attractive value proposition for any commercial lighting project.

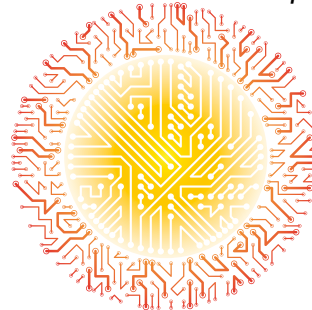


Plan for redundancy. Eliminate maintenance.

The concept of Xeramix R is to account for 'when' the driver fails rather than 'if' the driver will fail.

Electronic components

LED drivers consist of electronic circuitry to rectify, filter and regulate the incoming power suitably for LEDs. The many components in these circuits are subject to degradation from heat generated through normal operation. Careful design of LED luminaires can ensure optimal life-time by underrunning or limiting the LED driver however failure is inevitable. The concept of Xeramix R is to account for 'when' the driver fails rather than 'if' the driver will fail.



Potential thermal performance factors

densely packed circuits

higher than expected ambient temperature

continual expansion & contraction weakens contact

poor air flow

Maintenance costs

The cost of servicing luminaires on a commercial project can be an expensive process and easily exceed the cost of the luminaire itself. This is due to the many facets of carrying out the following ;

- *Labour costs of a qualified contractor*
- *obtaining permits where required*
- *closing public access to the area*
- *lost revenue from closures*
- *access lift and other equipment hire*
- *complying to health & safety practices*
- *potential accidental property damage*
- *administration of the entire process*

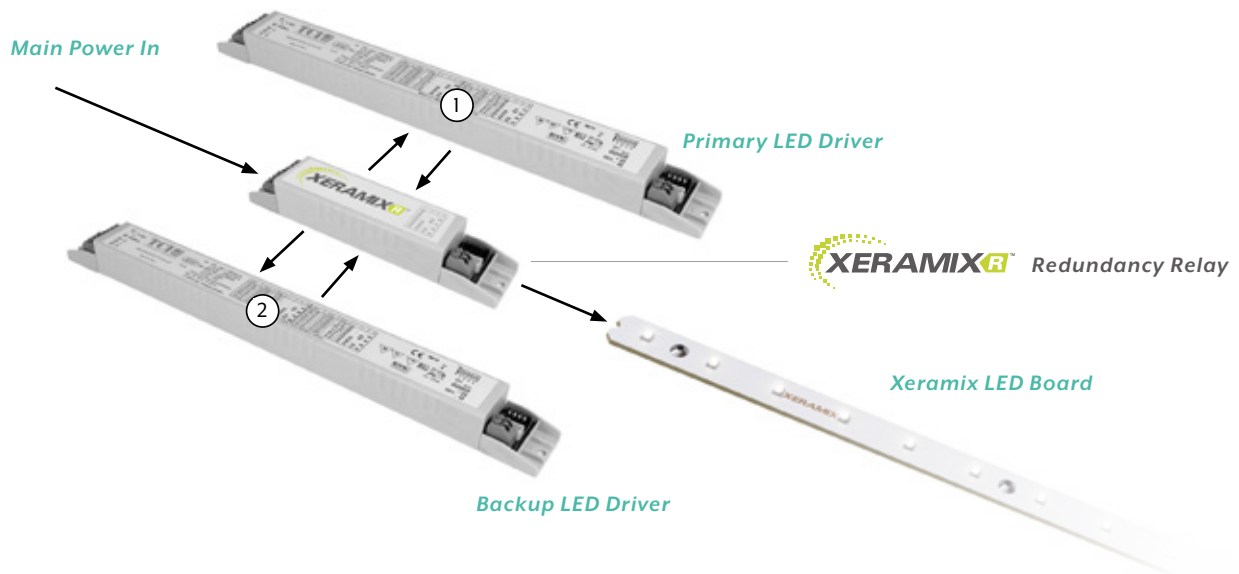
This entire process can occur several times as typically the first site visit determines the required parts from the manufacturer. This can take days or weeks to obtain before the repair can actually be carried out.



Maintenance and associated costs are expensive particularly for commercial applications.

Keep it simple. Make it reliable.

Inbuilt redundancy that offers complete peace of mind for years to come.



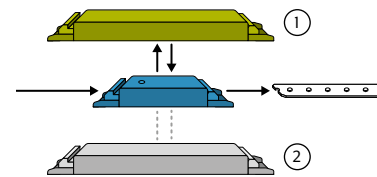
The sheer simplicity of the Xeramix R device is what makes it so effective. The power flows to the primary LED driver via the internal relay, which is energised by the primary driver's output. When the primary LED driver output fails, it will no longer power the relay coil, switching the mains power to the backup driver. A small external indicator shows if this has occurred and the backup driver is engaged.

Electro-magnetic reliability

The core design embraces the proven reliability of electro-magnetic relay operation with minimal additional passive components. If the device itself were to fail, it would only result in engaging the backup driver, providing seamless operation and complete peace of mind.

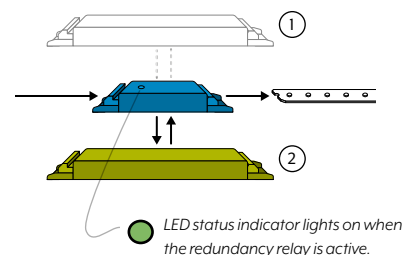
Stage 1

Normal Operation.
Driver #1 powers the LED board.



Stage 2

Double Redundancy Operation.
Driver #2 powers the LED board if Driver #1 or the Redundancy Relay should fail.



Let us show you how to benefit from Xeramix R.

The unaccounted cost of maintenance on a lighting project over time could prove costly. Xeramix R removes that risk.



Xeramix R LED System.

Small investment at initial cost however minimal maintenance required.



Typical LED Systems.

Initial cost maybe lower. Maintenance costs are unknown.



Industry Best Warranty

Xero Linear Lighting Systems offer a 15 year limited warranty on a range of products using the Xeramix R system. For more information on this exceptional warranty, please visit www.xerolighting.com/warranty

Contact Xero

For a comprehensive proposal of the potential maintenance free lifetime of your next lighting project, please contact your local Xero office. An experienced representative can assist calculating the return on investment for your project and client with complete peace of mind for years to come.



Xero Linear Lighting Systems
16 Voyager Circuit, Glendenning
NSW Australia 2761

P: +61 2 8599 9788

E: headoffice@xerolighting.com

www.xerolighting.com