

DATA SHEET

XERO
TECHNOLOGY
ADVANCED



XTA | 2.0 Square

metric

84mm Wide x 90mm High

imperial

2" Wide x 3.54" High



Highly Configurable

Hi Edwin, can you assist
with correct
suspension detail

All XTA products can be made with lit, or unlit,
corners which provide the designer with a myriad
of design options.



bend options



135°



cross 90°



tee 90°



custom



corner 90°



ceiling to wall

General enquiries
E lights@xerolighting.com
W xerolighting.com
To get in touch with your local Xero
Distributor Visit [XEROContacts](#)

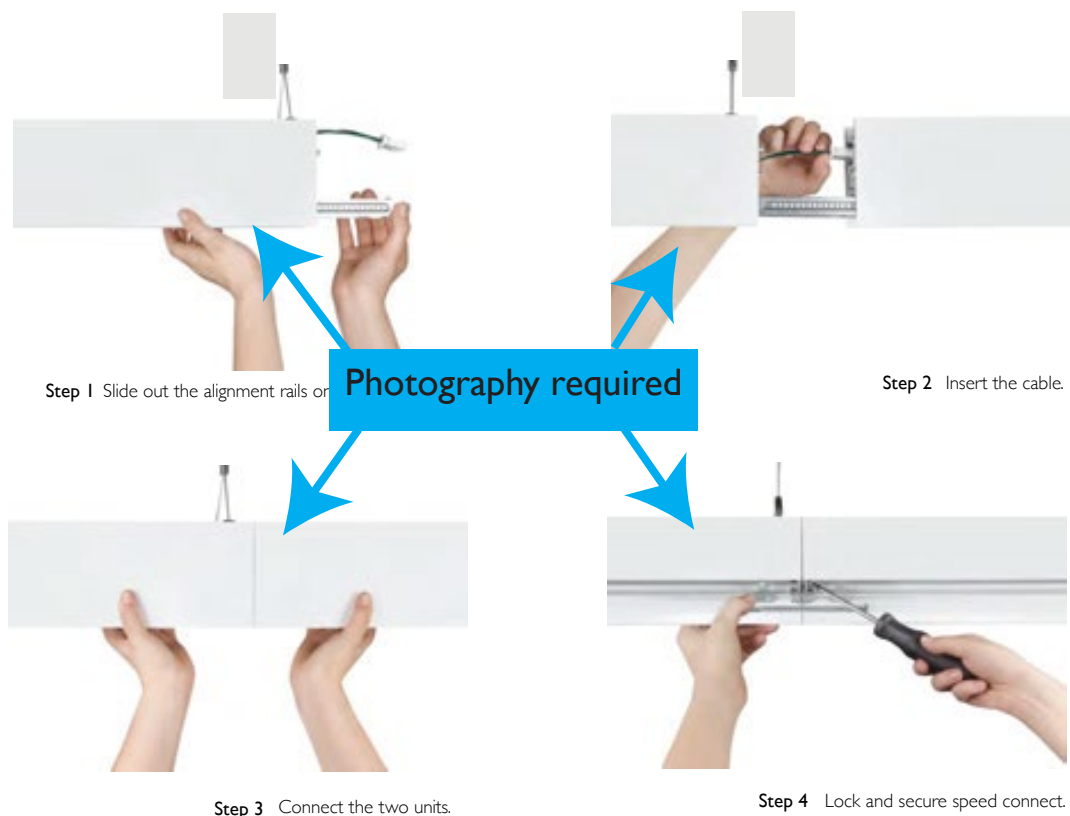


Easy installation



The patented Speed connect system is an industry first joining system that has many benefits

1. fastest install time with no disassembly/ reassembly required
2. guaranteed light leak free joins
3. polarised plug and socket for interconnection of internal cabling.
4. External XXXXXX latch provides positive connection between pieces and reduces install time



General enquiries
E lights@xerolighting.com
W xerolighting.com
 To get in touch with your local Xero
 Distributor Visit [XEROContacts](#)

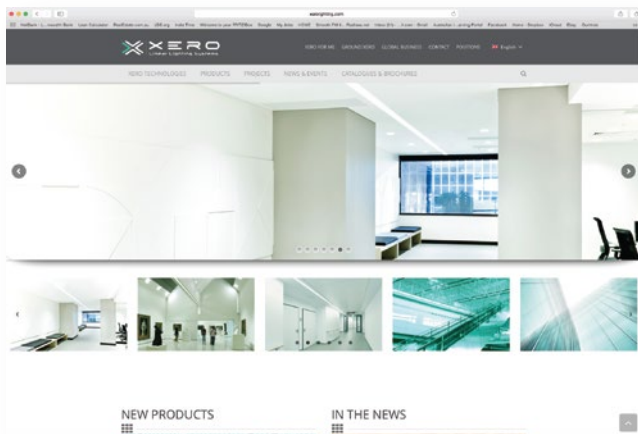


XTA | 2.0 Square
indoor series IP20

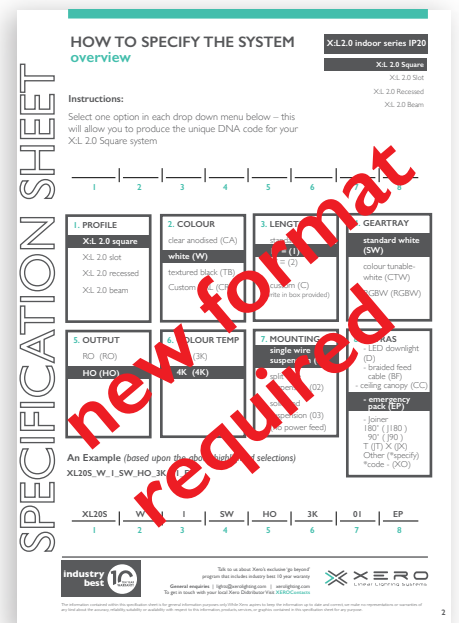
X Configurator

The X Configurator allows you to design and build your customised lighting system. To ensure that your profile specifically caters to your project application follow the simple 8 step build process to obtain your unique DNA code. Select your profile, choose your colour, length, gear tray, output, colour temperature, mounting requirement and choose from the selection of extras

Choose from the online option at xerolighting.com or simply download the interactive PDF specification profile you desire from the product pages section



to access the profile configurator visit xerolighting.com



General Specifications:

LED luminaries shall employ ceramic based LED's with ZHAGA compliant boards
 LED luminaries shall have removable gear trays
 LED luminaries shall have upgradeable boards and drivers
 LED luminaries shall have light leak free joining systems
 LED Luminaires shall have 100,000 hour L90 B10 lifetime
 LED Luminaires shall have colour spatial uniformity of 3 step macadam ellipse at end of life
 LED luminaries shall have site adjustable drive current selection capability without the need for additional parts
 LED Luminaires shall have thermal ambient temperature rating of 75 degrees C

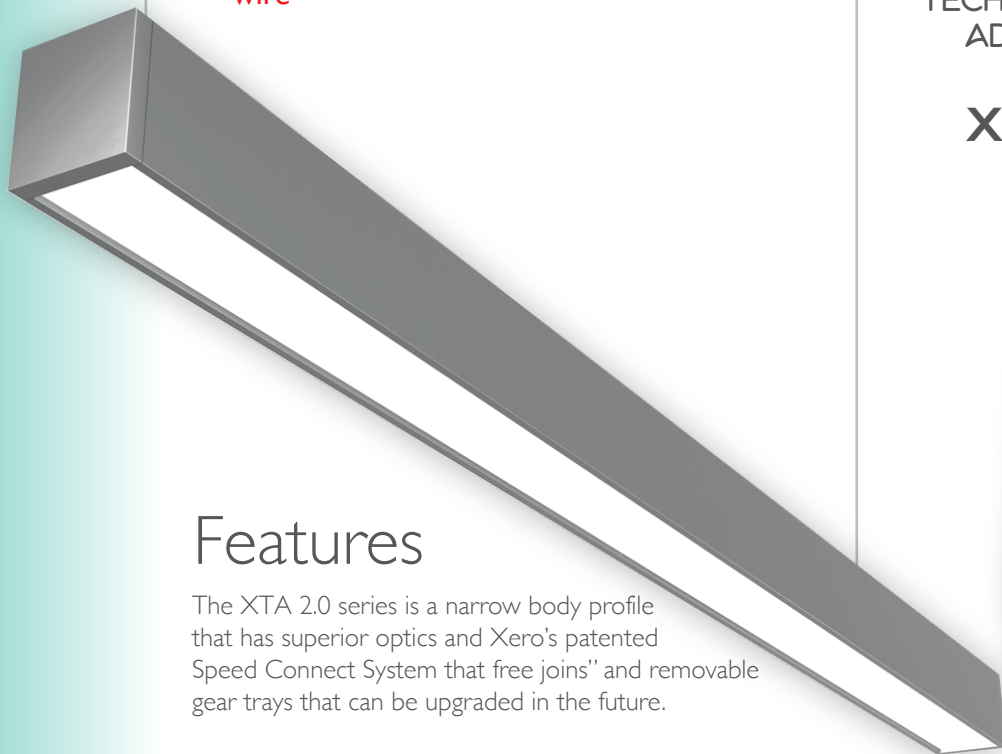
General enquiries
 E lights@xerolighting.com
 W xerolighting.com
 To get in touch with your local Xero
 Distributor Visit [XEROContacts](#)



XERO
TECHNOLOGY
ADVANCED 

XTA | 2.0 Square

technical data



add suspension wire



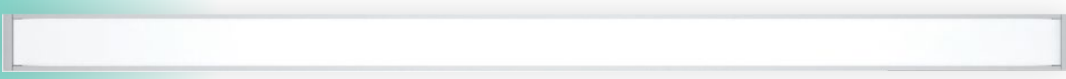
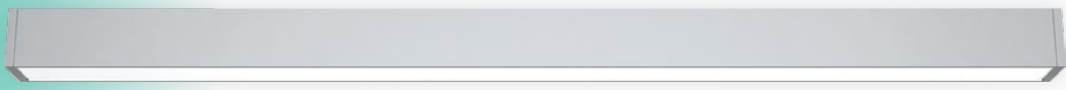
XTA | 2.0 Square

indoor series IP20

metric	84mm Wide x 90mm High
imperial	2" Wide x 3.54" High

Features

The XTA 2.0 series is a narrow body profile that has superior optics and Xero's patented Speed Connect System that free joins" and removable gear trays that can be upgraded in the future.



Benefits

Xero's Xeramix linear light engines and drivers that come with a 10 year warranty, 90° and 180° joiners that can be lit or unlit, allowing endless possibilities with continuous ribbons of light without compromise.

General enquiries
E lights@xerolighting.com
W xerolighting.com
To get in touch with your local Xero
Distributor Visit [XEROContacts](#)



The information contained within this specification sheet is for general information purposes only. While Xero aspires to keep the information up to date and correct, we make no representations or warranties of any kind about the accuracy, reliability, suitability or availability with respect to this information, products, services, or graphics contained in this specification sheet for any purpose.



XTA | 2.0 Square
indoor series IP20

metric 84mm Wide x 90mm High

imperial 2" Wide x 3.54" High

Performance

Xero Linear Lighting Systems incorporate high end detailing for all their high performance luminaries

XX lumens / watt – delivered
100,000 hours (L90 B10 @ 75°C)
40% less energy

Performance data coming
Photometry needed first

General enquiries
 E lights@xerolighting.com
 W xerolighting.com
 To get in touch with your local Xero Distributor Visit [XEROContacts](#)



The information contained within this specification sheet is for general information purposes only. While Xero aspires to keep the information up to date and correct, we make no representations or warranties of any kind about the accuracy, reliability, suitability or availability with respect to this information, products, services, or graphics contained in this specification sheet for any purpose.

meticulous attention to detail

Xero Linear Lighting Systems incorporate high end detailing for all their high performance luminaries that includes -

- ceiling canopies
- braided power entry cables
- laser etched endplates
- custom finishes

guaranteed by an industry unmatched 10 Year Warranty



suspension canopy

braided power entry cables
 laser etched endplates
 custom finishes



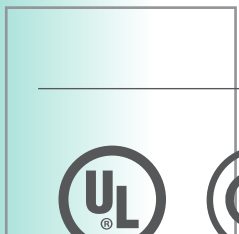
braided power entry cables

guaranteed by an industry unmatched 10 Year Warranty

Products to come via Edwin for photography



laser etched endplates



custom finishes



UL Certificate of compliance



CE approval



RCM regulatory compliance mark



CCC china compulsory certificate



UL Certificate of compliance



CE approval



RCM regulatory compliance mark



CCC china compulsory certificate

General enquiries
 E lights@xerolighting.com
 W xerolighting.com
 To get in touch with your local Xero
 Distributor Visit [XEROContacts](#)



The information contained within this specification sheet is for general information purposes only. While Xero aspires to keep the information up to date and correct, we make no representations or warranties of any kind about the accuracy, reliability, suitability or availability with respect to this information, products, services, or graphics contained in this specification sheet for any purpose.

Optical control

All XTA profiles come with many diffuser options for glare control in any situation

Optic white louvre

poly

Photography required

plexi

microprism

General enquiries
E lights@xerolighting.com
W xerolighting.com
To get in touch with your local Xero
Distributor Visit [XEROContacts](#)



XTA | 2.0 Square
indoor series IP20

Accessories and options



downlights

Copy to go here, Copy to go here,
Copy to go here, Copy to go here, Copy to go here,
Copy to go here, Copy to go here,
Copy to go here.



emergency packs

Copy to go here, Copy to go here,
Copy to go here, Copy to go here, Copy to go here,
Copy to go here, Copy to go here,
Copy to go here.



sensors / daylight
harvesting

Copy to go here, Copy to go here,
Copy to go here, Copy to go here, Copy to go here,
Copy to go here, Copy to go here,
Copy to go here.

General enquiries
E lights@xerolighting.com
W xerolighting.com
To get in touch with your local Xero
Distributor Visit [XEROContacts](#)



Standard lengths

Fixture length		Overall length	
2'	600mm	23"	584.2mm
3'	900mm	34"	863.6mm
4'	1200mm	45"	1143.0mm
5'	1500mm	56"	1422.0mm
6'	1800mm	67"	1701.8mm
7'	2000mm	78"	1981.2mm
8'	2300mm	89"	2260.6mm
9'	2600mm	100"	2540.0mm
10'	2900mm	111"	2819.4mm
11'	3100mm	122"	3098.8mm

Continuous runs

Metric & (imperial) pendant continuous run guide - standard lengths			
nominal fixture length	overall dimension	nominal fixture length	overall dimension
3300mm (11')	3378.2mm (133")	9300mm (32')	9245.6 (364")
3600mm (12')	3657.6mm (144")	9600mm (33')	9525 (375")
3900mm (13')	3397mm (155")	9800mm (34')	9804.4 (386")
4200mm (14')	4216.4mm (166")	10100mm (35')	10083.8 (397")
4500mm (15')	4495.8mm (177")	10300mm (36')	10363.2 (408")
4800mm (16')	4775.2mm (188")	10600mm (37')	10642.6 (419")
5100mm (17')	5054.6mm (199")	10900mm (38')	10922 (430")
5400mm (18')	5334mm (210")	11200mm (39')	11201.4 (441")
5700mm (19')	5613.4mm (221")	11400mm (40')	11480.8 (452")
5900mm (20')	5892.8mm (232")	11700mm (41')	11760.2 (463")
6200mm (21')	6172.2mm (243")	12000mm (42')	12039.6 (474")
6500mm (22')	6451.6mm (254")	12300mm (43')	12319 (485")
6800mm (23')	6731mm (265")	12600mm (44')	12598.4 (496")
7000mm (24')	7010.4mm (276")	12900mm (45')	12877.8 (507")
7300mm (25')	7289.8mm (287")	13200mm (46')	13157.2 (528")
7600mm (26')	7569.2mm (298")	13500mm (47')	13436.6 (539")
7900mm (27')	7848.6mm (309")	13800mm (48')	13716 (550")
8100mm (28')	8128mm (320")	14000mm (49')	13995.4 (561")
8400mm (29')	8407.4mm (331")	14300mm (50')	14274.8 (572")
8700mm (30')	8686.8mm (342")	14600mm (51')	14554.2 (583")
9000mm (31')	8966.2mm (353")	14900mm (52')	14833.6 (594")

Custom lengths

custom lengths are available in 1" [25mm] increments above the minimum pendant length of 23" [584.2mm]

General enquiries
 E lights@xerolighting.com
 W xerolighting.com
 To get in touch with your local Xero
 Distributor Visit [XEROContacts](#)



XTA | 2.0 Square
indoor series IP20

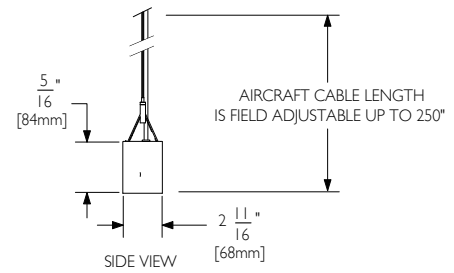
Technical data



Side View



Bottom View



Specifications

Output*	4ft. length 120mm	(Delivered lumens)	3000*K		4000*K		RGB	RGBW	Cyanosis
			LO	HO	LO	HO			
Electrical	CRI	80+							
	Lumen maintenance	100,000 hours [L90 @ 75°C] / 150,000hrs [L70 @ 25°C]							
	Power consumption								
	Voltage input range	120 - 277V							
Physical	Control methods	Dimming options for white light: 0-10V, DALI, DMX Optional RGB / Sunset Dimming control DMX or DALI XI							
	Approvals	UL / CE / CCC / AS:NZS / EMC							
	Dimensions	TBA							
	Housing	Aluminium extrusion with anodised or powdercoated finish							
	Diffuser	Frosted acrylic lens / Polycarbonate lens / microprism lens / white optic low brightness louvre							
	Connections	Speed connect joining system with polarised electrical connection between sections							
	Mounting	Field adjustable wire suspensions / rod suspensions / wall mounting / surface mount							
	Compatible ceiling types	Suitable for gyprock (drywall) ceilings, metal pan, concrete, timber and T-bar grid ceilings							
	Joiner options	Corner 90*, Cross 90*, and Tee 90*and straight 180* join							
	Operating temperatures	-25°C to 75°C (-13F to 167F)							
	Environment	Dry - indoor applications only							
	LED board types	Xeramix LED boards in 25mm / 100mm / 280mm / 560mm lengths (Zhaga compatible)							

General enquiries
 E lights@xerolighting.com
 W xerolighting.com
 To get in touch with your local Xero
 Distributor Visit [XEROContacts](#)



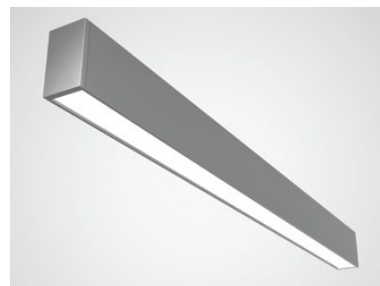
The information contained within this specification sheet is for general information purposes only. While Xero aspires to keep the information up to date and correct, we make no representations or warranties of any kind about the accuracy, reliability, suitability or availability with respect to this information, products, services, or graphics contained in this specification sheet for any purpose.

XTA | 2.0 Square
indoor series IP20

meet the family

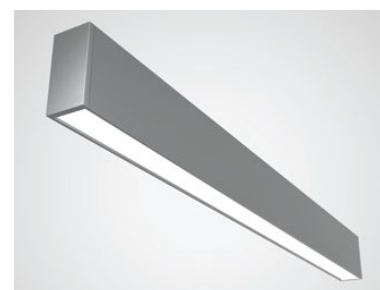
XTA | 2.0 Slot

The XTA 2.0 series is a narrow body profile that has superior optics and Xero's patented Speed join system that enables truly "light leak free joins" and removable gear trays that can be upgraded in the future.



XTA | 2.0 Beam

The XTA 2.0 series is a narrow body profile that has superior optics and Xero's patented Speed join system that enables truly "light leak free joins" and removable gear trays that can be upgraded in the future.



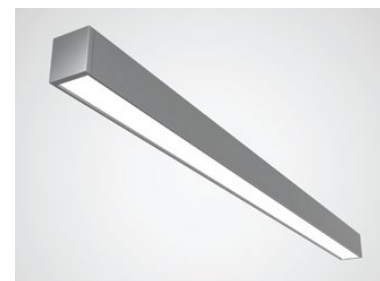
XTA | 2.0 Recessed

The XTA 2.0 series is a narrow body profile that has superior optics and Xero's patented Speed join system that enables truly "light leak free joins" and removable gear trays that can be upgraded in the future.



XTA | 2.0 Square

The XTA 2.0 series is a narrow body profile that has superior optics and Xero's patented Speed join system that enables truly "light leak free joins" and removable gear trays that can be upgraded in the future.



IP55 Versions

also available
refer to IP55 Brochures
in the products section
xerolighting.com/products

General enquiries
E lights@xerolighting.com
W xerolighting.com
To get in touch with your local Xero
Distributor Visit XEROContacts



General enquiries
E lights@xerolighting.com W xerolighting.com
To get in touch with your local Xero
Distributor Visit [XEROContacts](#)

