

Speed Connect™

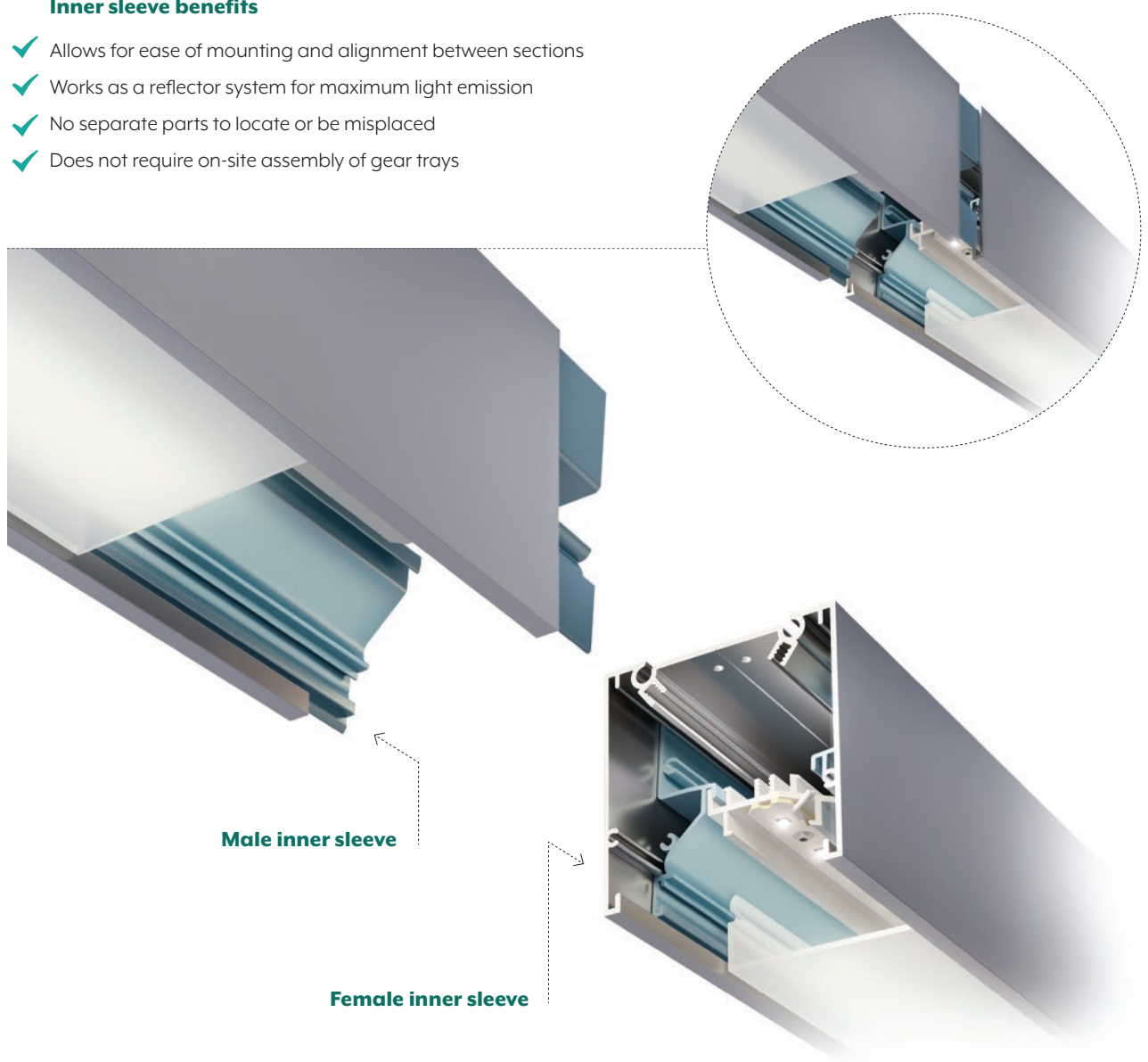
Our patented joining system is not only the fastest in the market, it incorporates LUMI-SEAL™ for a complete 'light leak free' join. Its multiple benefits for both installer and client's project sets it apart from the rest, reaching a new pinnacle of linear lighting.

Inner sleeve benefits

- ✓ Allows for ease of mounting and alignment between sections
- ✓ Works as a reflector system for maximum light emission
- ✓ No separate parts to locate or be misplaced
- ✓ Does not require on-site assembly of gear trays

Precision alignment

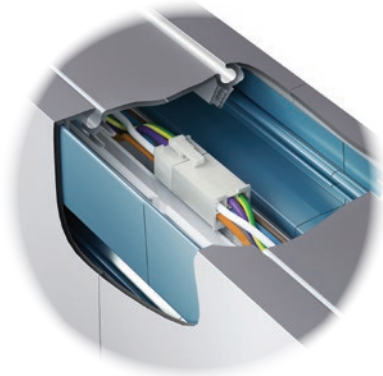
The inner sleeve coupled with roll pins provide precise multi-axial alignment.





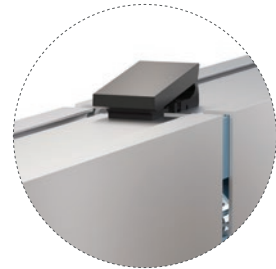
Quick plug wiring

Pre-wired gear trays simply plug together with the proven reliability of MOLEX® connectors.



Low profile latch

Couples the two profiles together using tension to eliminate the gap.



The LUMI-SEAL™ advantage

- ✓ Eliminates light spill at extrusion and diffuser
- ✓ Practically seamless joins along the complete length
- ✓ Architecturally desirable 'clean lines'